

## Mana client for testing with the Mana Server (for Windows).

1. **The client, compiled from the source code repository cloned from** (<https://github.com/mana/mana.git>).

### Problems:

- *Missing the required libraries: **libgcc\_s\_dw2-1.dll, libstdc++-6.dll** (These libraries are not available in the repository <https://github.com/mana/mana-mingw-libs.git>).*
- **Client crash** after adding the necessary libraries.

### Debugger log:

Building to ensure sources are up-to-date

Selecting target:

Windows

Adding source dir: C:\manaclient\  
Adding source dir: C:\manaclient\  
Adding file: C:\manaclient\mana.exe  
Changing directory to: C:/manaclient/.

Set variable:

PATH=.;C:\manaclient\lib;C:\CodeBlocks\MinGW\bin;C:\CodeBlocks\MinGW;C:\WINDOWS\system32;C:\WINDO

WS;C:\WINDOWS\system32\wbem

Starting debugger: C:\CodeBlocks\MINGW\bin\gdb.exe -nx -fullname -quiet -args C:/manaclient/mana.exe

done

Registered new type: wxString

Registered new type: STL String

Registered new type: STL Vector

Setting breakpoints

Debugger name and version: GNU gdb (GDB) 7.5

Child process PID: 1752

Error while reading shared library symbols for C:\manaclient\libcurl-4.dll:

Error while reading shared library symbols for C:\manaclient\SDL.dll:

Error while reading shared library symbols for C:\manaclient\SDL\_image.dll:

Error while reading shared library symbols for C:\manaclient\libpng12-0.dll:

Error while reading shared library symbols for C:\manaclient\libiconv2.dll:

Error while reading shared library symbols for C:\manaclient\SDL\_mixer.dll:

Error while reading shared library symbols for C:\manaclient\SDL\_net.dll:

Error while reading shared library symbols for C:\manaclient\libxml2-2.dll:

Error while reading shared library symbols for C:\manaclient\libiconv-2.dll:

Error while reading shared library symbols for C:\manaclient\libcurl-4.dll:

Error while reading shared library symbols for C:\manaclient\SDL.dll:

Error while reading shared library symbols for C:\manaclient\SDL\_image.dll:

Error while reading shared library symbols for C:\manaclient\libpng12-0.dll:

Error while reading shared library symbols for C:\manaclient\libiconv2.dll:

Error while reading shared library symbols for C:\manaclient\SDL\_mixer.dll:

Error while reading shared library symbols for C:\manaclient\SDL\_net.dll:

Error while reading shared library symbols for C:\manaclient\libxml2-2.dll:

Error while reading shared library symbols for C:\manaclient\libiconv-2.dll:

Error while reading shared library symbols for C:\manaclient\libcurl-4.dll:

Error while reading shared library symbols for C:\manaclient\SDL.dll:

Error while reading shared library symbols for C:\manaclient\SDL\_image.dll:

Error while reading shared library symbols for C:\manaclient\libpng12-0.dll:

Error while reading shared library symbols for C:\manaclient\libiconv2.dll:

Error while reading shared library symbols for C:\manaclient\SDL\_mixer.dll:

Error while reading shared library symbols for C:\manaclient\SDL\_net.dll:

Error while reading shared library symbols for C:\manaclient\libxml2-2.dll:

Error while reading shared library symbols for C:\manaclient\libiconv-2.dll:

Program received signal SIGSEGV, Segmentation fault.

In gcn::Color::Color(int, int, int, int) () (C:\manaclient\guichan.dll)

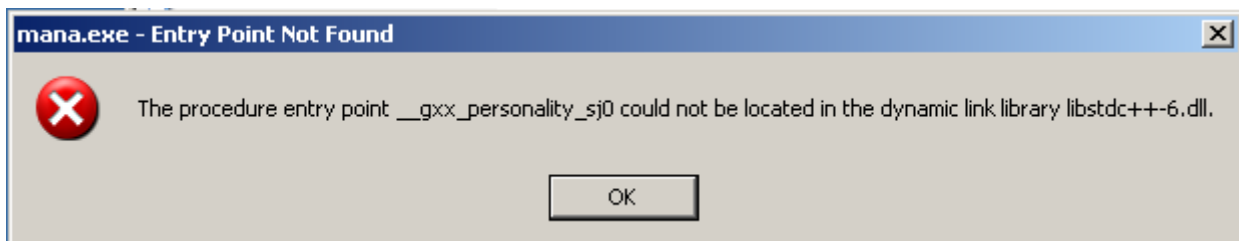
#1 0x00585727 in \_\_static\_initialization\_and\_destruction\_0 (\_\_initialize\_p=<optimized out>, \_\_priority=<optimized

```
out>) at C:\manaclient\src\gui\palette.cpp:36
C:\manaclient\src\gui\palette.cpp:36:1137:beg:0x585727
At C:\manaclient\src\gui\palette.cpp:36
#1 0x00585727 in __static_initialization_and_destruction_0 (__initialize_p=<optimized out>, __priority=<optimized out>) at C:\manaclient\src\gui\palette.cpp:36
C:\manaclient\src\gui\palette.cpp:36:1137:beg:0x585727
Continuing...
Program received signal SIGSEGV, Segmentation fault.
In gcn::Color::Color(int, int, int, int) () (C:\manaclient\guichan.dll)
#1 0x00585727 in __static_initialization_and_destruction_0 (__initialize_p=<optimized out>, __priority=<optimized out>) at C:\manaclient\src\gui\palette.cpp:36
C:\manaclient\src\gui\palette.cpp:36:1137:beg:0x585727
At C:\manaclient\src\gui\palette.cpp:36
#1 0x00585727 in __static_initialization_and_destruction_0 (__initialize_p=<optimized out>, __priority=<optimized out>) at C:\manaclient\src\gui\palette.cpp:36
C:\manaclient\src\gui\palette.cpp:36:1137:beg:0x585727
```

## 2. Nightly build 2013.06.19.0340.

### Problems:

- Missing the required libraries: **libgcc\_s\_dw2-1.dll**, **libstdc++-6.dll**, **libgcc\_s\_sjlj-1.dll** (These libraries are not available in the repository <https://github.com/mana/mana-mingw-libs.git>).
- Client crash after adding the necessary libraries.



## 3. Nightly build 2013.06.17.0313.

### Problems:

- Client crash pressing «Play»

### stdout log:

```
[04:16:07.25] Error parsing XML file C:\Documents and Settings\Vatarus\Application
Data/mana/manasource/config.xml
[04:16:07.25] Couldn't open configuration file: C:\Documents and Settings\Vatarus\Application
Data/mana/manasource/config.xml
```

Error occurred on Monday, August 5, 2013 at 21:22:29.

C:\Documents and Settings\Vatarus\Desktop\ClientsMana\mana-2013.06.19.0340\mana\_06170313.exe caused an Access Violation at location 004f4538 in module C:\Documents and Settings\Vatarus\Desktop\ClientsMana\mana-2013.06.19.0340\mana\_06170313.exe Reading from location 0000001c.